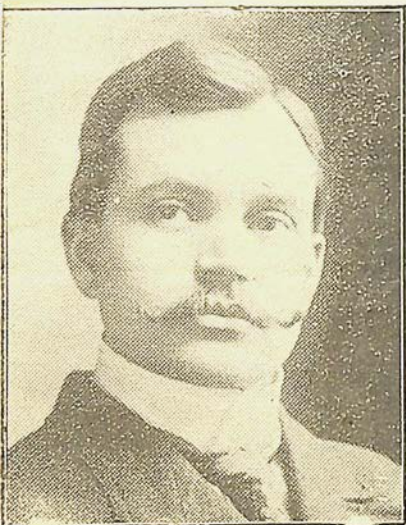


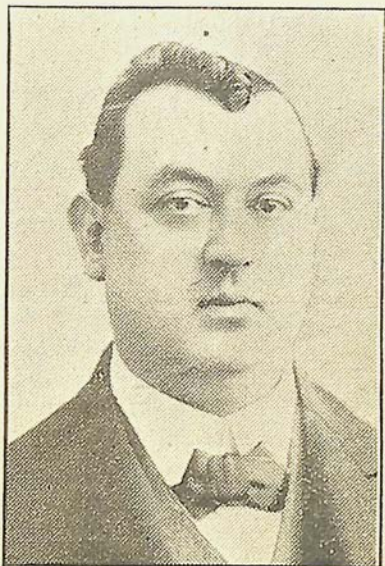
4/2/20  
**KARN HALL**

468 St. Catherine St  
West. Tel. Up 775.

# OUIMETOSCOPE



**L. E. OUIMET, Prop.**



**FRED. HOWARTH, Mgr.**

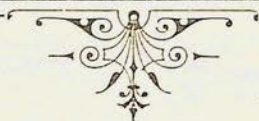
**GRAND OPENING OF SUMMER SEASON**

**Starting Tuesday May 1st 1906**

Every Afternoon at **2.15.**

Every Evening at **8 15.**

# The "OUIMETOSCOPE"



## PROGRAMME

- 1—The Motor Car and Cripple.  
L'automobile et le Cul-de-Jatte.
- 2—The Fatal Wig.  
La Perruque Fatale.
- 3—Arab Fantasia.  
Une Fantaisie Arabe
- 4—The Bewitched Lover.  
L'Amoureux malchanceux.
- 5—Scenes at the London Zoo.  
Scènes au Jardin Zoologique de Londres.
- 6—Higgins the leaper.  
Le Sauteur Higgins.
- 7—The River Pirates.  
Les Pirates de la Rivière.
- 8—The Return of Sherlock Holmes.  
Un exploit de Sherlock Holmes.
- 9— INTERMISSION
- 10—The White Caps.  
L'Association des "White Caps."

### 11—Illustrated Songs :

When the Lilacs blooms again.  
I never thought I'd miss You as I do.

**BOB PRICE, Singer.**

- 12—Alcohol and Tuberculosis.  
L'Alcool et la Tuberculose.
- 13—Boxing Horses.—Chevaux Boxeurs.
- 14—A disagreeable mistake.— Une Surprise désagréable.
- 15—Elephants shooting the Chutes.  
Le Plongeon des Elephants.
- 16— INTERMISSION
- 17—Moon Shiners.—Les fabricants de Whiskey illicite.
- 18—Rhum and Cherries.—Le Rhum et les Cerises.
- 19—The Policeman and the Automobile.  
L'homme de Police et l'Automobile.
- 20—Uncles Tom Cabin Traveling Co.  
La case de l'Oncle Tom en Province.
- 21—An Escape from Sing Sing.  
Une Évasion à Sing Sing.

### CUT THIS OUT

**THIS COUPON** when presented at the  
Box Office will be accepted on payment  
of **10c** and will admit one lady and a  
child to any of the afternoon exhibitions.

# “OUIMETOSCOPE”

---

---

**Box Office Open**  
FROM 10 A.M. TO 10 P.M.

---

---



## OUR POLICY

### TO PROVIDE

THE BEST MOVING PICTURE AND  
ILLUSTRATED SONG EXHIBITION  
THAT CAN BE PROVIDED  
COURTEOUS - CIVIL - OBLIGING  
ATTACHEES .. .. .

---

---

### DIRECTION :

L. E. OUIMET	-	-	-	DIR.-PROP.
FRED. HOWARTH	-	-	-	MANAGER
THOM. WILKENS	-	-	-	ELEC.-OPERATOR
MME DE LA CHAUX	-	-	-	PIANIST

---

---

# Animated Pictures